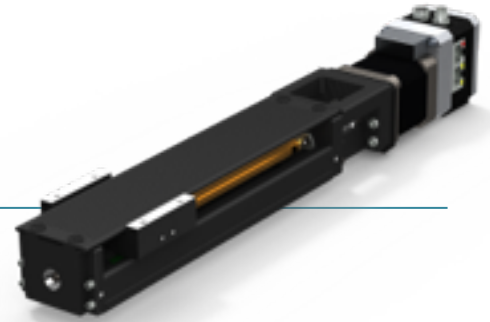


PA / SPA LINEAR ACTUATORS



NAMING CONVENTIONS

PA SERIES BALL SCREW ACTUATOR

PA<Size>-<Block Style> -<Lead>-<Stroke>-<Precision>-<Hardware Options>-<Motor>-<Interface>

Ex. PA20-A-06-080-S-10A0-17L30C-CAN2

SPA SERIES CAGED BALL SCREW ACTUATOR

SPA<Size>-<Block Style> -<Lead>-<Stroke>-<Precision>-<Hardware Options>-<Motor>-<Interface>

Ex. SPA33-C-20-500-P-00A0-23S30C-P

Size: Height from base of actuator to top of carriage in mm

15 : 15mm
20 : 20mm
26 : 26mm
30 : 30mm
33 : 33mm

Block Style: Size and number of carriage blocks

A : Single Long Block
B : Double Long Block
C : Single Short Block
D : Double Short Block

Available block styles differ depending on the model

Lead: Ball screw lead in mm

01 : 1 mm
02 : 2 mm
06 : 6 mm
10 : 10 mm
12 : 12 mm
20 : 20 mm

Available ball screw leads differ depending on the model

Stroke: Range of motion between mechanical stops

The labeled stroke in the product number is not a true indication of the range of motion between mechanical stops. The strokes available for each model are indicated in the technical drawings available at myostat.ca/IntegratedActuatorsDrawings. For Further information please contact

Precision: The positioning repeatability, accuracy, and backlash

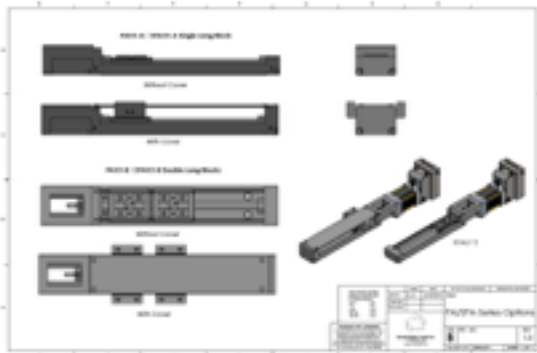
S : Standard
H : High Accuracy
P : Precision

Available precision grades differ depending on the model

Hardware Options: Inclusion of a cover

10A0 : With Cover
00A0 : Without Cover

Please review PA-SPA-Series-Options.PDF for more details regarding Carriages and Covers for the SPA and PA Actuators



Motor: The Motor type used

11S30A : CM1-X-11S30A
11L30A : CM1-X-11L30A
17S30C : CM1-X-17S30C
17L30C : CM1-X-17L30C
23S30C : CM1-X-23S30C
23L20C : CM1-X-23L20C
56B10C : CM2-X-56B10C
56B20C : CM2-X-56B20C

Available motors differ depending on the model

Interface: Method of controlling the motor

P : Step/direction, 12pin Molex connector
C : Basic Programmable 12pin Molex connector
IPX : Ethernet TCP/IP
EIP : EthernetIP
MTP : MODBUS TCP
CAN2 : CANopen Single Axis
CAN3 : CANopen Daisy Chain
SRLM : RS-232 DB9
SRLS : Pass through DB9
EIO : Expanded IO DE15